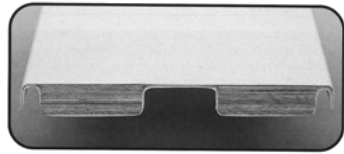


**S.R. Smith Inc.**



Reinforced fiberglass construction w/acrylic outside surface. Includes Jig.



A quality board for home pools. Features two tapered wood runners laminated to an acrylic skin.

**FLYTE-DECK II FIBERGLASS STAND**

ITEM NO.

1/2 Meter Flyte-Deck II Stand for 6' Board	G3085
1/2 Meter Flyte-Deck II Stand for 8' Board	G3087
1/2 Meter Flyte-Deck II Stand for 10' Board	G3090
Complete Spring Assy #606 for 6' Board for G3065 Base	G3067
Complete Spring Assy #608 for 8' Board for G3065 Base	G3068
Steel Jump Stand W/ Jig (Spring not Inc.)	G3065
Jig only for 6' Flyte Deck Stand	G3086
Jig only for 8' Flyte Deck Stand	G3088
Jig only for 10' Flyte Deck Stand	G3091

**FIBRE-DIVE BOARD**

6' (AB-6) Diving Board - 18" Wide	G1000
(Drilled 10" on Center)	
6' Fibre Diving Board - 18" Wide	G3000
8' Fibre Diving Board - 18" Wide	G3002
10' Fibre Diving Board - 18" Wide	G3004
6', 8' & 10' Fibre-Dive boards with designer colors are now available by special order. F.O.B. Mfg. Plant.	

**FRONTIER II & III**

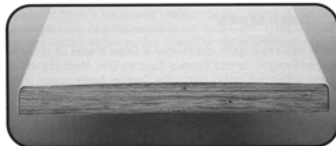
Frontier II boards intended for light to moderate duty use on residential pools. Frontier III designed for moderate to heavy duty use on residential pools.



6' (3-Hole) Frontier II Spring Board	G3008
8' (3-Hole) Frontier II Spring Board	G3009
6,8' (3-Hole) Frontier II Jig	G1068
6' Frontier II Spring Only w/ 3 Hole Jig	G3220
8' (3-Hole) Frontier II Spring w/ Jig	G3225
6' (2-Hole) Frontier III Spring Board	G1033
8' (2-Hole) Frontier III Spring Board	G1038
12' Frontier III Diving Board - 18" Wide	G3006

**GLASS-HIDE**

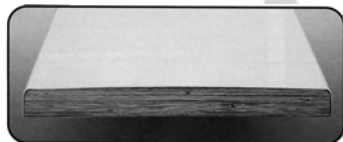
An all-purpose board made for diving pleasure with an attractive appearance. Fiberglass covering with solid laminated wood core. Designed for use in all climates - on private pools.



6' Glas-Hide Diving Board - 18" Wide	G3010
8' Glas-Hide Diving Board - 18" Wide	G3012
10' Glas-Hide Diving Board - 18" Wide	G3014

**COMMERCIAL**

Heavily reinforced with fiberglass encasing the laminated wood core, plus additional fiberglass reinforcing at the fulcrum area. (Ideal for hotels, motels & public pools)



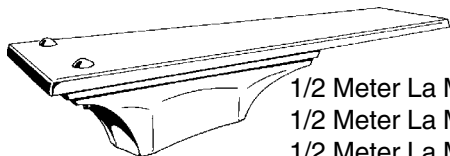
10' Commercial Diving Board - 18" Wide	G3018
12' Commercial Diving Board - 18" Wide	G3015
14' Commercial Diving Board - 20" Wide	G3020
16' Commercial Diving Board - 20" Wide	G3025

**ALUMINUM**

Recommended for commercial pools. Exceptional durability & outstanding action. Proven "I" beam extrusions are epoxy glued with welded end construction. Safe non-slipsurface resists wear.



8' Aluminum Diving Board - 18" Wide	G3030
10' Aluminum Diving Board - 18" Wide	G3035
12' Aluminum Diving Board - 18" Wide	G3040
14' Aluminum Diving Board - 20" Wide	G3045
16' Aluminum Diving Board - 20" Wide	G3050

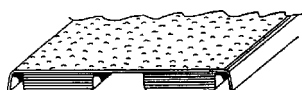


## LA MESA DIVE STANDS

1/2 Meter La Mesa Dive Stand for	6' Board	(White)	G3083
1/2 Meter La Mesa Dive Stand for	8' Board	(White)	G3089
1/2 Meter La Mesa Dive Stand for	10' Board	(White)	G3092
1/2 Meter La Mesa Dive Stand for	6' Board	(Tan)	G3083T
1/2 Meter La Mesa Dive Stand for	8' Board	(Tan)	G3085T
1/2 Meter La Mesa Dive Stand for	8' Board	(Black)	G3089B*
La Mesa Dive Mounting Jig for	6' Board		G3111
La Mesa Dive Mounting Jig for	8' Board		G3112
La Mesa Dive Mounting Jig for	10' Board		G3114

**INTER-FAB**

## DURO-BEAM DIVE BOARDS



Two laminated beams running the length of the board encased in fiberglass with acrylic skin

6'	Duro-Beam Diving Board	(White)	G3001
8'	Duro-Beam Diving Board	(White)	G3005
8'	Duro-Beam Diving Board	(Black)	G3005B*
10'	Duro-Beam Diving Board	(White)	G3007
6'	Duro-Beam Diving Board	(Tan)	G3001T
8'	Duro-Beam Diving Board	(Tan)	G3005
	Dura-Beam Board Mounting Kit		G3250

\*Non-Stock Item

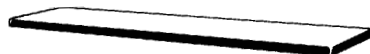
## T7



7' T7 Diving Board	(Gray)	G3003
T7 Springs w/ Spring to base S.S Mounting Hardware		G3036
T7 Base & Jig w/ Jig to base S.S Mounting Hardware		G3037
T7 Edgewater Waterfall Assembly		G3038
T7 Edgewater Waterfall Assembly w/ LED Lighting System		G3039
T7 Edgewater Waterfall Assembly w/ Fiber Optic Lighting		G3041

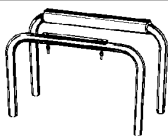
All Diving Board Prices Include Hardware

## ANTHONY BOARDS



6' 3-Hole Special Anthony Board	G1030
8' 3-Hole Special Anthony Board	G1035
Hardware Only for Anthony Board	G1037

**SR SMITH 606/608 Steel Jump Stand w/Jig (Spring not included)** G3065



## U-FRAME DIVE STANDS

18" Diving Board Stand-Box of 2 Rails	G3075
24" Diving Board Stand-Box of 2 Rails	G3080
24" Heavy Duty Board Stand - Box of 2 Rails	G3081



## FULCRUM BUMPERS

20" Replacement Fulcrum Bumper-White for U-Frame	G3084
--	-------

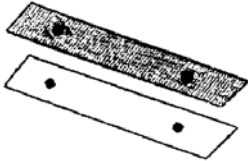
## DIVING BOARD RESURFACING KITS & SAFETY WALK

Epoxy kit for creating a non-skid surface on diving board



White	G1090
Blue Ice	G1091
AquaMist	G1092
Scotch Tread Cut to Size	G3110
Safety Walk 60' Roll/ 18" Wide	G3115
SR Smith Black Nonskid Pad for Ladder Tread	H1247

**HARDWARE FOR DIVING BOARDS**



Standard Hardware for Residential Boards		G1027
4-1/2" Bolt & Nut for Diving Board	(Bag of 2)	G3059
5" Bolt & Nut for Diving Board	(Bag of 2)	G3058
5-1/2" Bolt & Nut for Diving Board	(Bag of 2)	G3060
6" Bolt & Nut for Diving Board	(Bag of 2)	G3063
1/2"-13 Nut-Hex Head		G3055
1/2" Washer - Flat		G3057
1/2" x 5" Carriage Bolt		G3064
Bolt Kit for Flyte Deck II Dive Stand	#71-209-710	G3021
Aluminum Hardware Mounting Kit - 18"		G3052
Aluminum Hardware Mounting Kit - 20"		G3051
Rubber Mounting Pad Only - 18"		G3054
Rubber Mounting Pad Only - 20"		G3053
Jig Prong Epoxy Repair Kit - Interfab (4 ea. 1/2" Bolts)		G3107
Jig Prong Epoxy Repair Kit - Interfab (3 ea. 5/8" Bolts)		G3108

**Plastic Lifeguard Chairs**

\*Special Order Only\*

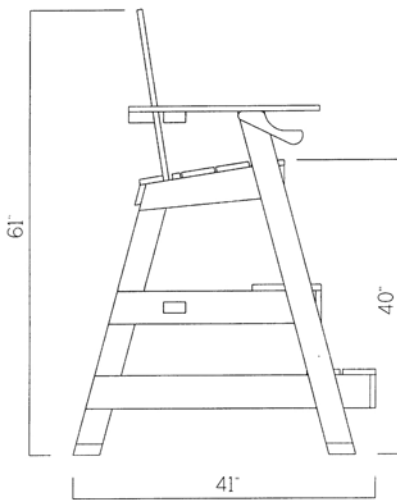
Lifeguard Chairs come complete with:

Cup holder, Umbrella holder (1 5/8" diameter) umbrella not included

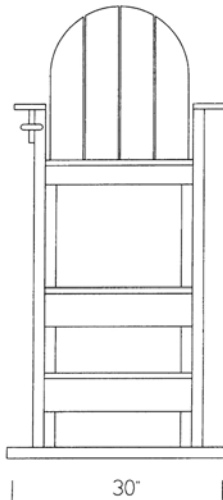
Textured surface on steps and platforms Some assembly required

They even float!

**LG 510  
LIFEGUARD CHAIR**



SIDE VIEW



FRONT VIEW

